

TOP ARM

MICROPHONE ARM ON AIR

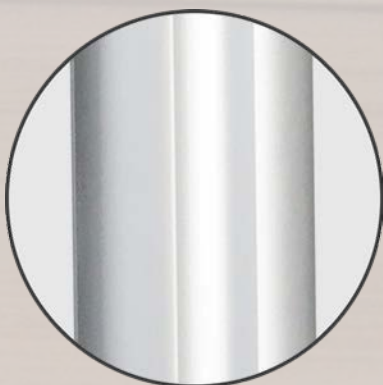
Ø 15,9



Joints injected in high mechanical strength polyamide.



OnAir LEDs indicator.



Built with aluminum tubes with anodized finish in 3 different colors.



Different models of bases

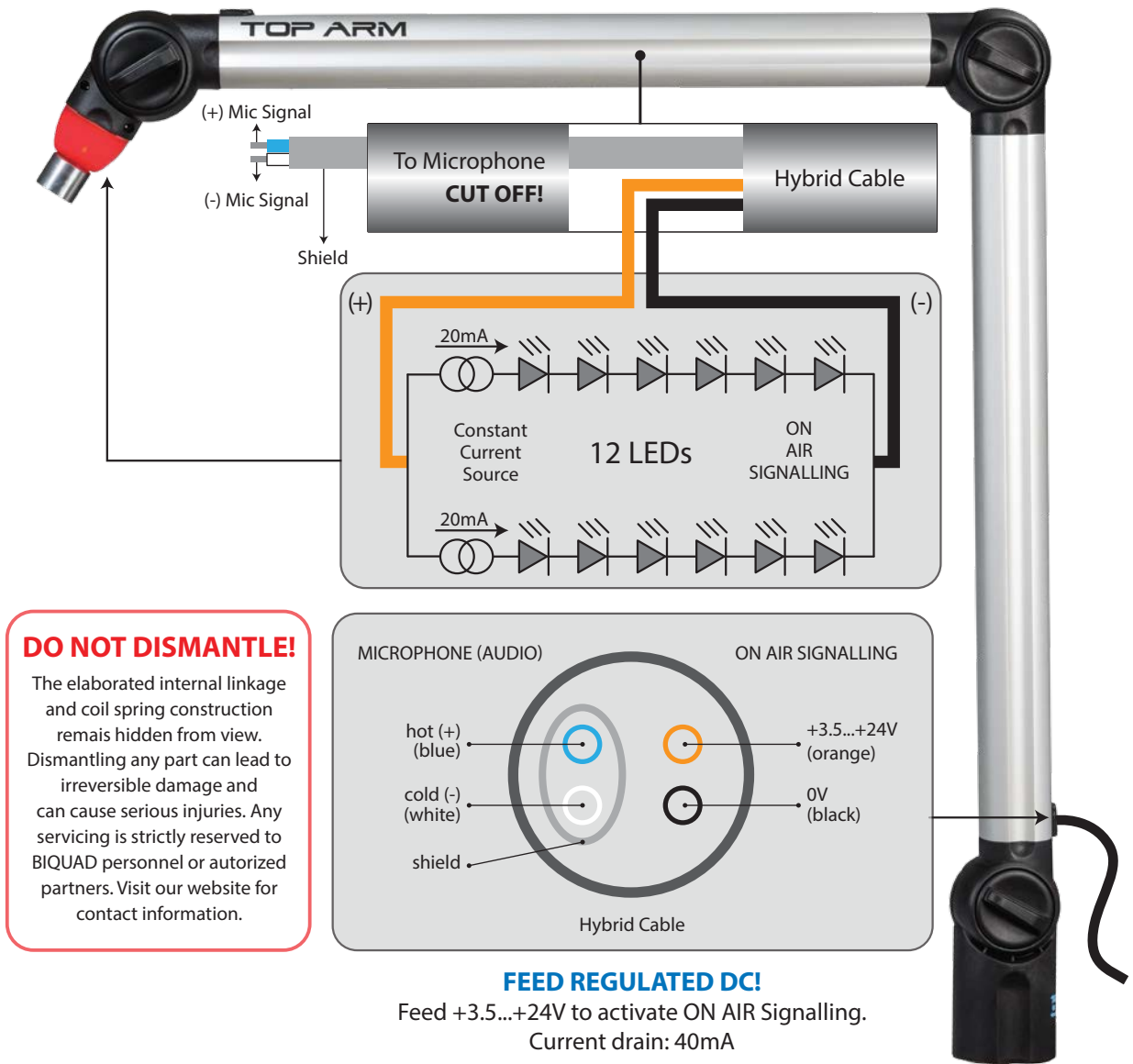
3 DIFFERENT COLORS

BLACK

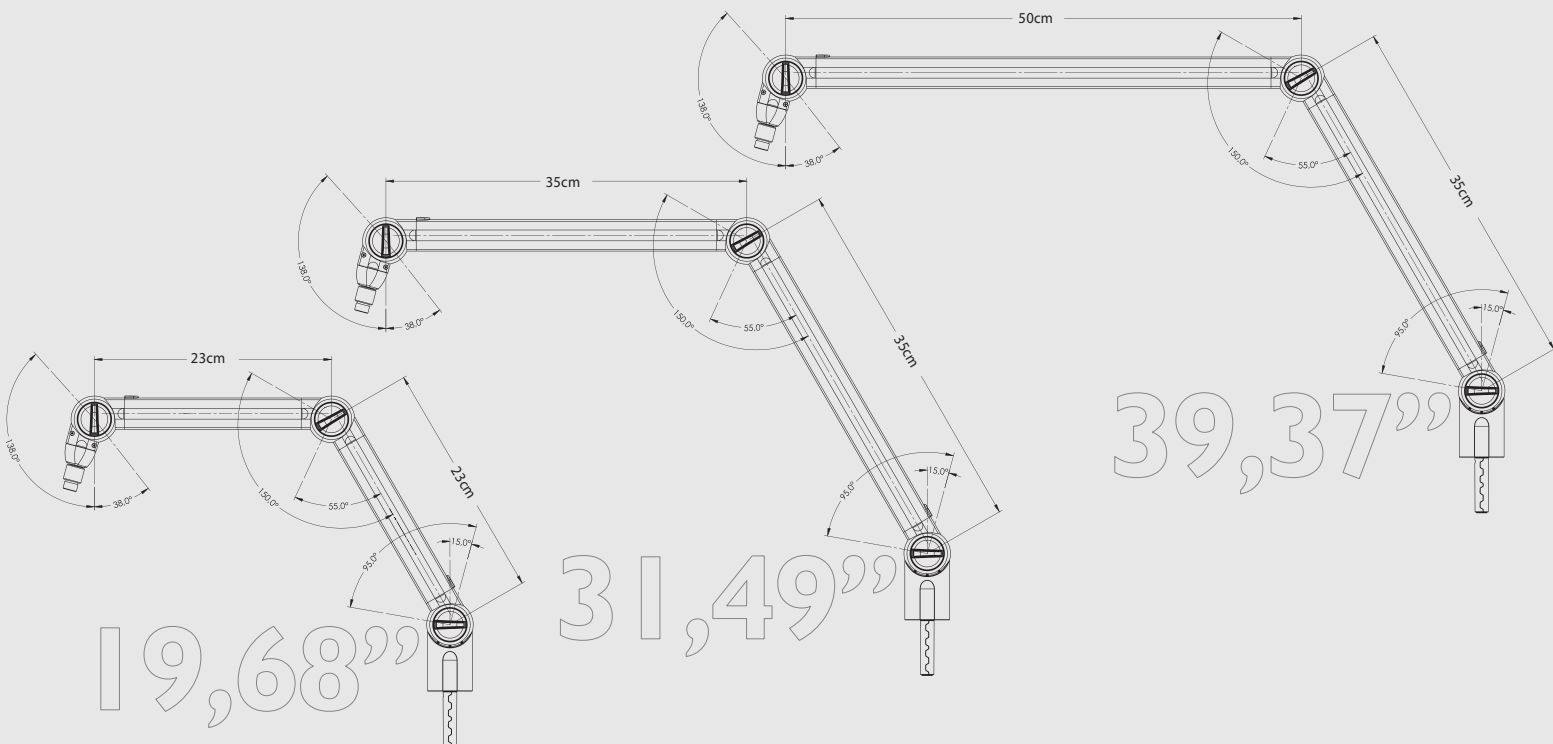
SILVER

BRONZE

WIRING DIAGRAM



MEASURES AND ANGULATION





TOP ARM

MICROPHONE ARM ON AIR

Biquad presents a new product in professional broadcast market, the new microphone arm with indicator "ON AIR" incorporated and fluid design called TOP ARM. As an evolution of the already known model FLEX ARM, the new model features a unique design, projected to cause visual impact in the workplace, ergonomic comfort, practicality, safety and durability in daily use.

More than a simple accessory, TOP ARM is a high standard equipment that contributes to an effective and harmonious use of the environment, its modern design allows for greater visual integration with modern radio studios, television and recording.

It has several mounting forms available with different options bases, smooth and precise movements and a lot of movement of versatility, allowing the microphone placement exactly where you want.

*Update your studio leaving
it more modern and beautiful,
use the line of TOP ARM.
Elegance and neatness!*

MICROPHONE ARM WITH FLUID DESIGN AND ON AIR INDICATOR INCORPORATED

To create a more convenient and secure environment, Biquad included in the product a indicator of LEDs on its end that indicates to the user that the microphone is "open" or in use. This indicator has great luminosity even in very bright environments with low current consumption.

The microphone signal integrity is guaranteed because the TOP ARM is provided with an exceptional quality cable for the traffic of the audio signal over the power of the LEDs, this cable has individual screens to ensure maximum noise immunity.

The TOP ARM is provided in three different lengths, 19,68", 31,49" and 39,37" with different fastening options and 3 different colors.

Soon, the family TOP ARM accessories will be expanded to include other mounting possibilities and solutions for integration with supports for video monitors. With full compatilbilidade with future accessories to be launched, you can integrate and increasingly optimize the use of your studio, be it radio, television or recording.

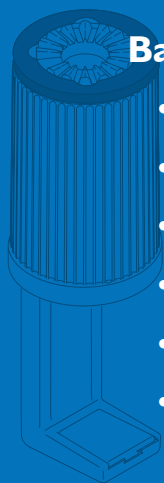


FEATURES

- Built with aluminum tubes with anodized finish in 3 different colors: black, bronze and silver;
- Joints injected in high mechanical strength polyamide;
- Springs and pressure system with steel cable mounted internally in the product;
- Pressure adjustment of the springs to support microphones with up to 4,40 lbs (2kg);
- Three different sizes: 19,68" (50cm), 31,49" (80cm) and 39,37" (100cm);
- Spring, audio cable, wire rope hidden by aluminum tubes and joints;
- Different possibilities of assembly and various working angles;
- Distinctive design, projected in a renowned professional studio design, fluid design, ergonomic and modern;
- Top quality, high durability and quality parts;
- Microphone with indicator "on air" with high brightness red LED light: Permissible voltage 3.5 to 24V with a 40mA current; *
- Future expansion of the accessory line with 100% compatibility;
- 4 different models of bases: Bushing, Table Clamp, Table Mount, Table Mount Trough.

* Para Drive ON AIR indicator, the audio console must be prepared for this feature through a GPO or output relay.

MODELS OF BASES



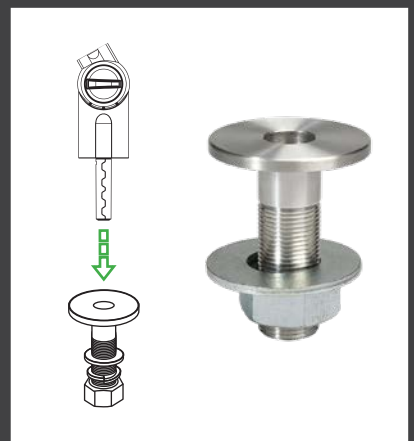
Base Table Clamp, Table Mount e Table Trough Mount

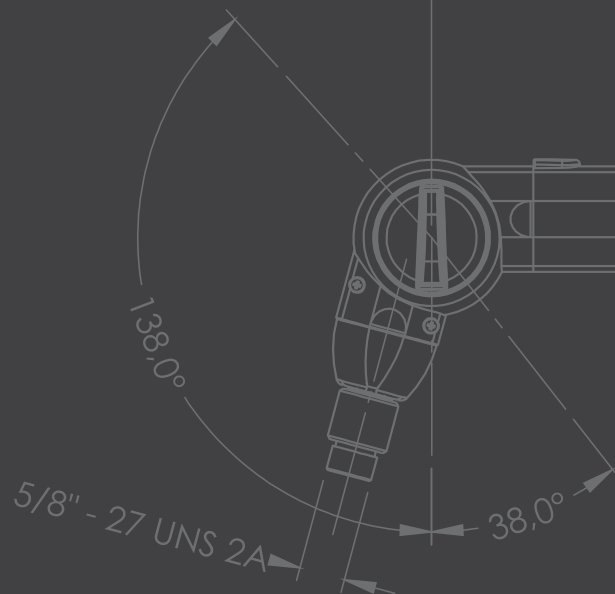
- Extremely robust construction;
- Injected in Zamak and high resistance polyamide;
- Serves any need for installation, can be installed on any type of table;
- 3 different models to meet different types of installations;
- Extends the height of the support up to 4,72" (12cm);
- Colored ring to give a touch of style in your product;

Base Bushing



- Extremely robust construction
- Injected in Zamak
- Can be used in every line of TOP ARM products
- Requires drilling table
- Discreet and functional
- Maximum thickness of the table for installation: 1,77" (4,5cm)





TOP ARM

MICROPHONE ARM ON AIR



*Intelligent
Solutions
for Broadcast.*

sales@biquadbroadcast.com • +55 35 3471-6399 • www.biquadbroadcast.com

Rua Marcos Flávio e Dias, 260 • Jardim Beira Rio • Santa Rita do Sapucaí • MG • Brazil • CEP: 37540-000